

# SPEC SHEET + MEASUREMENTS



## Eddie Bauer® Smooth Mid Layer Fleece Full-Zip. EB2460

### Product photo



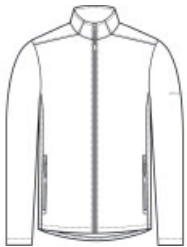
Built for versatility, this smooth-faced, brushed-back fleece is the ideal mid layer. Crafted from recycled polyester, this fleece makes a sustainable difference while keeping you warm and dry at work or play.

- 7.4-ounce, 100% recycled polyester fleece
- Exposed molded zippers with Eddie Bauer logo pulls
- Front zippered pockets
- Open cuffs and open drop tail hem
- Contrast heat transfer Eddie Bauer logo on left sleeve

### CARE INSTRUCTIONS

Machine Wash Cold With Like Colors. Do Not Use Fabric Softener. Do Not Bleach. Tumble Dry Low. Cool Iron, If Necessary. Do Not Dry Clean.

### Sketches



front



back

# SPEC SHEET + MEASUREMENTS



Eddie Bauer® Smooth Mid Layer Fleece Full-Zip. EB2460

## PRODUCT MEASUREMENTS

	XS	S	M	L	XL	2XL	3XL	4XL
Body Length at Back	27	28	29	30	31	32	32 1/2	33
Chest	18 1/2	20	21 1/2	23	24 1/2	26	28	30
Sleeve Length from Center Back	34 5/8	35 1/4	35 7/8	36 1/2	37 1/8	37 3/4	38 1/2	39 1/4

**Body Length at Back:** Measured from high point shoulder to finished hem at back.

**Chest:** Measured across the chest one inch below armhole when laid flat.

**Sleeve Length from Center Back:** Measure from Center Back neck to shoulder point to sleeve hem.

## SIZE CHARTS

	XS	S	M	L	XL	2XL	3XL	4XL
Chest	32-34	35-37	38-40	41-43	44-46	48-50	52-54	55-57

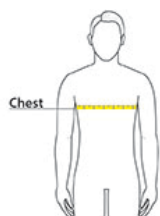
# SPEC SHEET + MEASUREMENTS



Eddie Bauer® Smooth Mid Layer Fleece Full-Zip. EB2460

## HOW TO MEASURE

---



### CHEST

Measure under the arm and around the fullest part of the chest with arms down, keeping tape horizontal.

## COLORS

---



Black  
PMS BLACK  
C



Iron Gate  
PMS 7540C



River Blue  
Navy  
PMS 533C